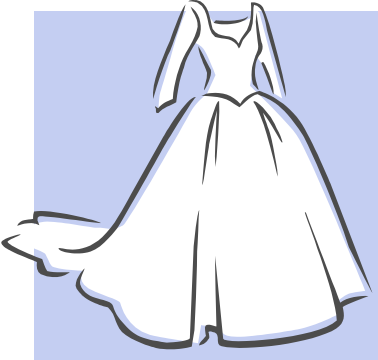


Women's Ministry



SAVE THE DATE: Sunday, June 10th @ 4PM **Saying Yes! Dresses Past & Present**

The executive board of LWML at Bethany is planning a wedding... Well, actually an event to help you remember the weddings past and present.

More information on how you can be a part of this event can be found at [signupgenius](#).

Key factors in the success and enjoyment will be having volunteers to help, women willing to loan their wedding/bridesmaids, mother of the bride/groom dresses and flower girl dresses, women willing to model the dresses, and escorts. If you have questions, contact: Libby Johnson 913-383-0963, mzigi@att.net or Barb Corder 913-491-1718, rcorder@kc.rr.com

If you have a hobby or business that might be wedding related, we want to hear from you! Everything from florals, hair/nails, food, travel...talk to Susan Parrish or Tammy Songer about how we can help share your contact info. with others.



E-NEWS: THE CONGREGATION CONNECTION

To keep Lutheran Women's Missionary League (LWML) members and supporters informed around the United States, the LWML e-News — an electronic newsletter, is emailed to subscribers approximately once a month. News of mission grants, activities and a monthly prayer are featured, as well as other news and links to LWML resources. To subscribe and keep up to date with the latest happenings, go to www.lwml.org and click on the News tab at the top of the page, then click on the e-News link. A paragraph about e-News comes up, click on the link provided in the text. This will give you a simple form to fill in your email address. You may also click on the links provided to read past issues of LWML e-News.

Kansas District of the Lutheran Women's Missionary League also has an e-News Connection. Visit: www.kansaslwml.org for the latest issue of the *Kansas Sunshine Newsletter*, add your name and email to receive a link when it is uploaded each quarter. Sign up to receive p-mail, keeping you in prayer and sharing the prayers of others.

LWML FINANCIAL AID AVAILABLE

The Kansas District LWML offers financial aid to Lutheran Church-Missouri Synod students from Kansas and attending **synodical schools** to prepare for a career or an advanced degree in church work as a **Pastor, Teacher, Deaconess, Parish Nurse, Parish Worker, Parish Assistant, Parish Social Worker, Director of Parish Music, Director of Christian Outreach or Director of Christian Education.**

To apply contact LWML Mission Projects Committee Member, **Carol Nix, 1441 N. Rock Rd. # 903, Wichita, KS 67206 (316) 634-2914** canshopks@cox.net to request an application. Or download application forms at: www.kansaslwml.org

The application is very basic, with a verification form to be completed by the Registrar or Admissions Office of the school you will be attending. *Most importantly* the deadline for BOTH forms **IS JUNE 1ST!!!**

If you qualify for LWML Financial Aid, don't forget to also apply to the Kansas District Scholarship Fund and Lutheran Layman's League for grant money! Visit: www.kslcms.org and look for Educational Grants under the Stewardship tab.

LENTEN DINNERS TO BE SERVED

Dinner will be available on Wednesday evenings prior to the Lenten Family Worship Services. Women from the LWML circles will be serving from 5:30-6:30 pm. The charge will be \$4.00 for adults, \$2.00 for ages 5-12 and FREE for under 5 yrs.

Miriam and Lydia Circles will serve Lasagna, Green Beans, Tossed Salad, Rolls, Dessert on Ash Wednesday, February 22nd.

Please call the church office to RSVP at 648-2228 by Monday at 4 pm. You may also include the words Lenten Meal when entering family names on the membership booklet during worship. Please include the number of adults and children. **This is very important to ensure that there is enough food to serve all that would like a meal.**